

ITEM NO.	PART NUMBER	DESCRIPTION	QTY.
1	20-0085	SPRING, POPPET	1
2	20-0092	NUT HEX 1 1/4" NPT 2-W	1
3	20-0093	GUIDE, POPPET	1
4	20-0701	BODY, 1 1/4" NPT	1
5	SEE TBL (SM)	POPPET ASSY	1
6	SEE TBL (SM)	O-RING	1

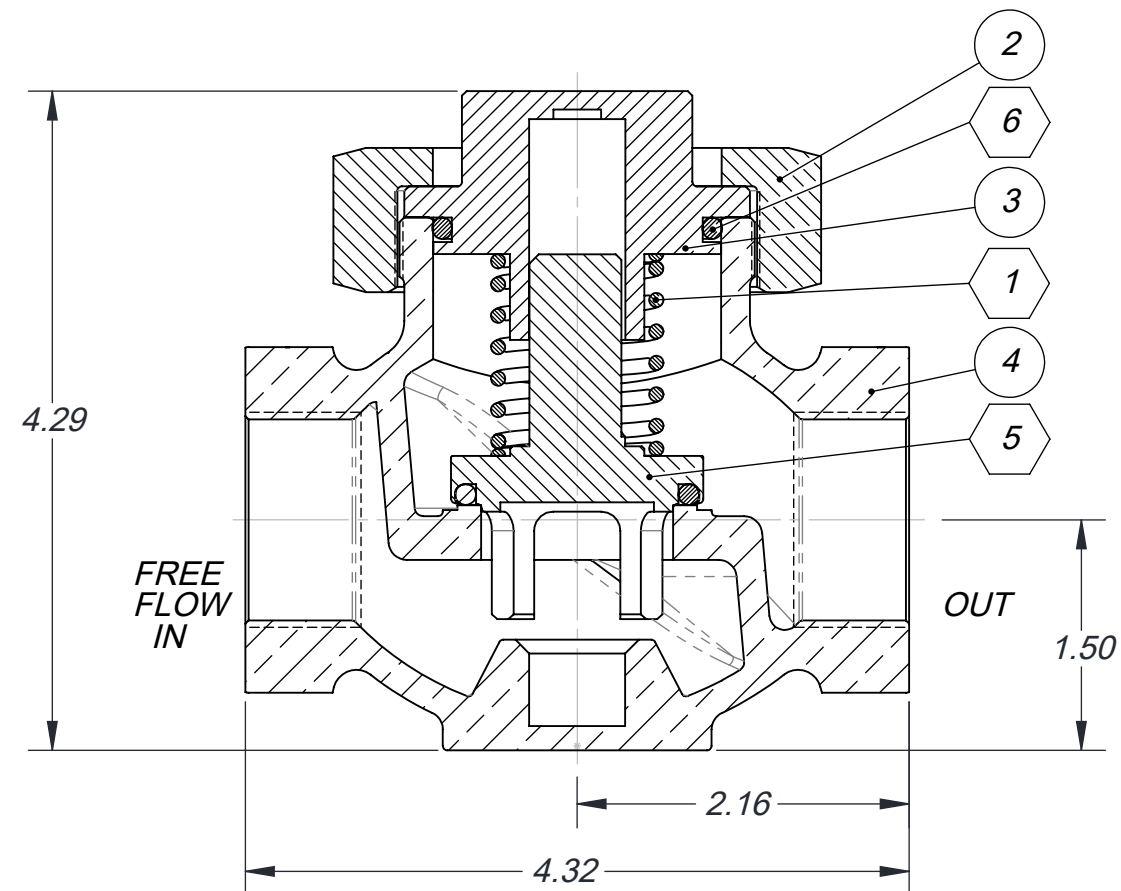
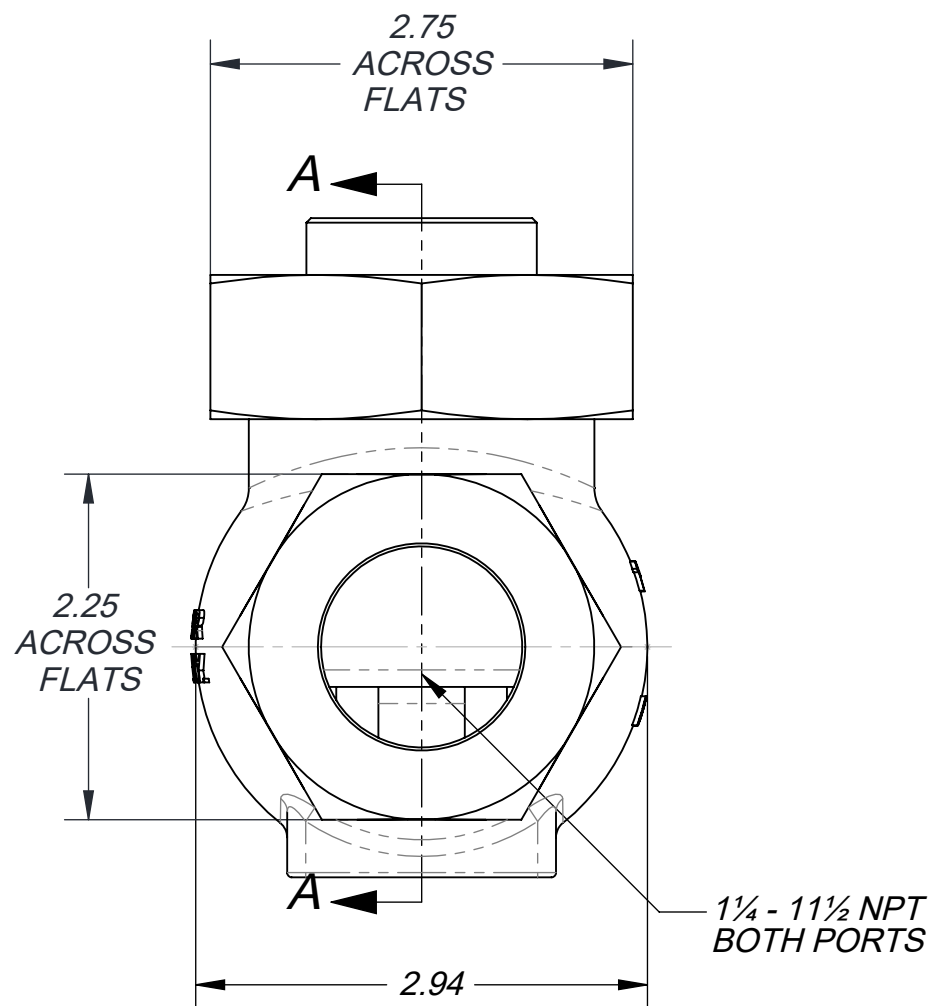
SEAL MATERIAL OPTIONS (SM)			
CODE	MATERIAL	O-RING	POPPET ASSY PART NO.
STD	BUNA - N+VITON	04-01-223	20-0094
-25	MOLY CTD BUNA		
-26	VITON	04-09-223	20-0094
-28	VITON+TEFLON		
-29	EPR		
-32	TEF+EPR+VIT		

# 550120 - SM

# B550120

- NOTES:
- PARTS IN HEXAGON BOX ARE INCLUDED IN BOTH ASSEMBLY AND REPAIR KITS. SEE TABLE (R/K) FOR REPLACEMENT PART NO.
  - PRESSURE RATING: 0 - 500 PSI
  - TEMP. RANGE: -30°F TO 225°F STD. (300°F OPT. SEALS)

REPAIR KITS (R/K)	
MATERIAL	PART NO.
BUNA - N	25-0103
VITON	25-0903



SECTION A-A  
SCALE 1 : 1.25

THIS DOCUMENT AND ITS CONTENTS ARE THE PROPERTY OF LEXAIR, INC. THEY ARE FURNISHED TO YOU ON THE FOLLOWING CONDITIONS: NO RIGHT OR LICENSE IN RESPECT OF THIS DOCUMENT OR ITS CONTENTS IS GIVEN OR WAIVED IN SUPPLYING THE DOCUMENT TO YOU. THIS DOCUMENT OR ITS CONTENTS ARE NOT TO BE USED OR TREATED IN ANY MANNER INCONSISTENT WITH THE RIGHTS OF LEXAIR, INC. OR TO ITS DETRIMENT AND ARE NOT TO BE COPIED, REPRODUCED, OR DISCLOSED OF, EXCEPT WITH ITS PRIOR WRITTEN CONSENT.

**REVISIONS**

**A** REDRAWN TO CURRENT  
ENGINEERING STANDARDS  
ECL: 99238 JDR 11-09-99

**B** REDRAWN TO CURRENT  
ENGINEERING STANDARDS  
ECL: 21036 TES 06-23-21

Tolerances Unless Otherwise Specified:		
TYPE	FINISHED	AS CAST
DEC .00	± .015	± .030
DEC .000	± .005	± .010
FRACTIONAL	± 1/64	± 1/32
ANGLES	± 1/2°	± 1°

MATERIAL SPEC.  
SEE TABLE

PROCESS SPEC.

PC. NO. 550120

MADE FROM

1 1/4" NPT CHECK VALVE

**B 550120**

CAD FILE 550120.drw

**Lexair, Inc.**

2025 Mercer RD, Lexington, Kentucky 40511

DRAWN	CHECKED	APRVD.
JDR	MFM	MFM
11-09-99	01-28-00	01-28-00

SHEET NO.	1 of 1	SHEETS
SCALE	1:1	
APPROX. WT.	5.606 lbs.	